

## History w/b 6/7/20

### Have you heard of Sutton Hoo?

<https://www.nationaltrust.org.uk/sutton-hoo/features/a-brief-introduction-to-sutton-hoo->



Where is it?

What was discovered at Sutton Hoo?

What is the connection to the Anglo-Saxons?

Why is the discovery significant?

When was the site discovered?

Sutton Hoo is situated in Sutton near Woodbridge, Suffolk on the East coast.



A ship was discovered and in the centre of the ship they found a burial chamber full of the most extraordinary treasures.

Sutton Hoo provides one of the richest sources of archaeological evidence for this period of the history of England's development.

## Sutton Hoo Ship Burial



On the site, archaeologists discovered that a huge wooden ship had been buried there in the ad 600s. The wood had rotted away, but it had left an impression in the soil showing the shape of the ship. The custom of ship burials was common with people from northern Europe. There are similar [Viking](#) remains in Denmark and Sweden. A hut had been built in the middle of the ship. Inside it was a coffin and many priceless treasures. The Anglo-Saxons believed that this was the best way for a powerful person to reach the afterlife when he had died.

The treasures found by archaeologists inside the ship included armor, weapons, inlaid ornaments, jewellery, silver and gold tableware, musical instruments, and gold coins. The coins, from the ad 620s, helped to date the burial.

The site also contained objects that showed that people in England during Anglo-Saxon times must have traded with the rest of Europe. The objects included a large silver dish made in Byzantium (in what is now Turkey) in about ad 500 and a set of silver bowls from the Mediterranean.



The ship would have been dragged from the river to the mound. It was quite a distance and hundreds of men would have been needed!

- > Who do you think was buried in the ship grave?
- > Click here to find out
- > <http://www.primaryhomeworkhelp.co.uk/saxons/suttonhoo/index.htm>



## Sutton Hoo: the helmet

*I think it's fair to say that the Sutton Hoo helmet is the face of the Anglo-Saxons, perhaps even all of the early middle ages in Europe. It is shown on numerous book covers, got its own commemorative stamp for the 250th anniversary of the British Museum and features in countless documentaries on the period.*

*Sonja Marzinzik, curator, British Museum*



- > A magnificent helmet was placed next to the body in the ship to show that the person was a fierce warrior.
- > It was made of iron. Only the wealthiest Anglo-Saxon warriors had helmets made of iron.
- > The amazing mask even had hole under the nose for the wearer to breathe.

## Task 1:

1.



2.



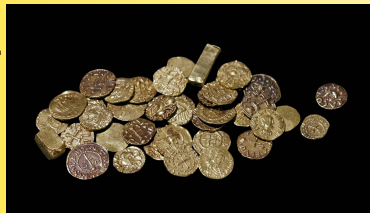
3.



4.



5.



6.



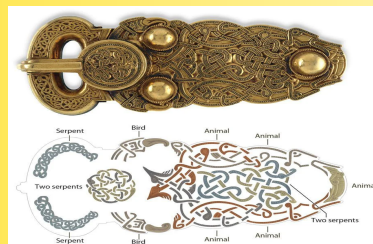
Look at the artefacts. Choose 4 of them. What do you think they are? Explain what you think the artefacts tells us about the Anglo-Saxons.

<https://www.youtube.com/watch?v=nb9vTu73xmE>



## Task 2:

- Study the patterns, motifs (patterns or design) and colours used on the different pieces and use this as a starting point to create your own design for a brooch or belt.



### Task 3:

Create an informative booklet for visitors to Sutton Hoo.

- > What to include:
- > Burial Mounds of Kings
- > Great ship burial
- > Come and see the reconstructed ship
- > Exhibition at Sutton Hoo!
- > Describe the landscape
- > Things to do - walking, shopping, visiting the café!
- > Draw pictures and include historical facts

