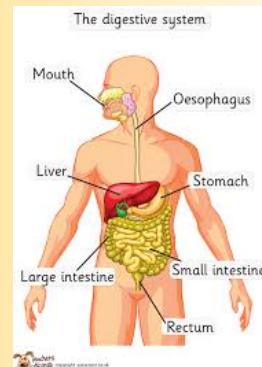
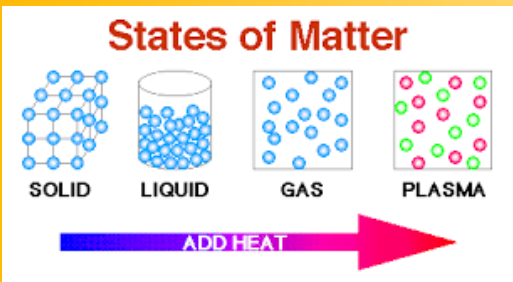
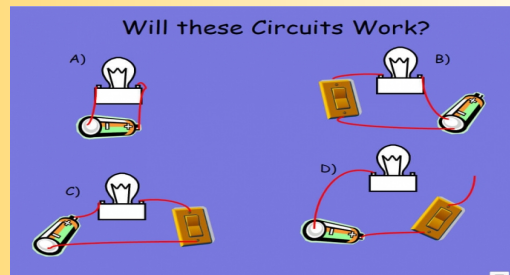


# End of year Science Quiz



There will be 5 sections with 5 questions in each.

I will send the answers on a separate sheet for your parents to share with you after completing the quiz.

Good luck!

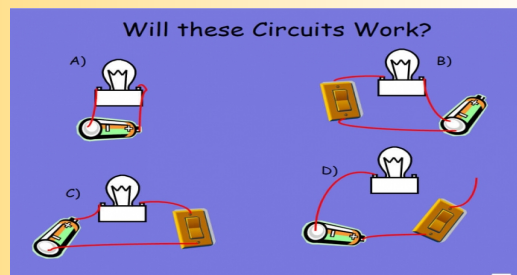
## Section One: Electricity

1. A circuit will only work when connected to:

- a) a switch
- b) a power source
- c) a buzzer
- d) a light source

2. What is a conductor?

- a) a type of battery
- b) a material that allows electricity to pass through
- c) a type of plastic
- d) a material that does not allow electricity to pass through



<http://www.switchedonkids.org.uk/fun-and-learning/electricity-quiz>

3. When connected to my circuit, which of these materials will make my bulb light up?

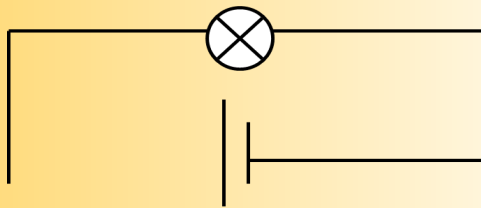
- a) a piece of paper
- b) a metal spoon
- c) a ruler
- d) a pencil

4 I made a circuit but I want to make my bulb brighter, what do I do?

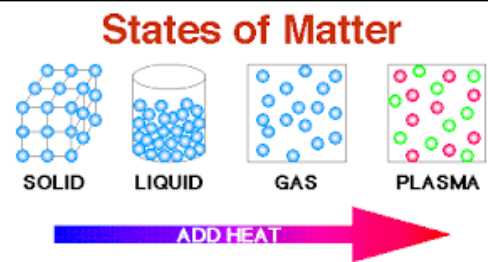
- a) add another bulb
- b) add a switch to my circuit
- c) add another battery
- d) replace the battery with a motor

5. My circuit won't work, what is the problem?

- a) My wire is not connected
- b) I am missing a battery
- c) A switch is open
- d) I am missing a buzzer



## Section 2: States of Matter



1. Is a balloon full of air or an empty balloon heavier?
2. What are the bubbles when you squeeze a cloth underwater?
3. Which of these materials is a solid?
  - a) a sponge
  - b) syrup
  - c) shampoo
4. What state of matter are ketchup and custard examples of?
5. How do you change a solid to a liquid?

## Section 3: Sound

1. Which of these can sound travel through?

- a) air
- b) water
- c) a door
- d) all of the above

2. The softer you hit a drum...

- a) the quieter the sound
- b) the lower the pitch of the sound
- c) the higher the pitch of the sound



3. What happens to the sound if you tighten the drum's skin?

- a) it gets lower in pitch
- b) it gets higher in pitch
- c) it stays the same



4. What happens to a guitar string as you tighten it?

- a) the sound made when plucked is lower in pitch
- b) the sound made when plucked is higher in pitch
- c) the sound stays the same



5. What is an echo?

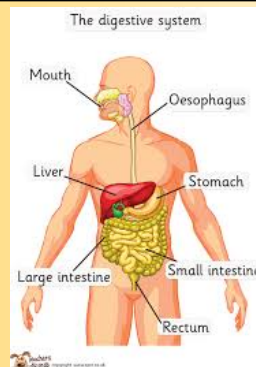


## Section 4: Teeth



1. How many sets of teeth do we have throughout our lives?
2. Which types of teeth are used to rip and tear food?
3. Which teeth are used for crushing and grinding food?
4. What is the function of the enamel?
5. What is the part of the tooth you can see above the gum?

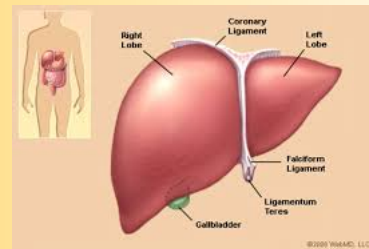
## Section 5: Digestion



1. Where does the digestive process begin?
2. What is the substance called that is created in the stomach when food is mixed with stomach acids?
3. What tube moves food from the back of your throat to the stomach?

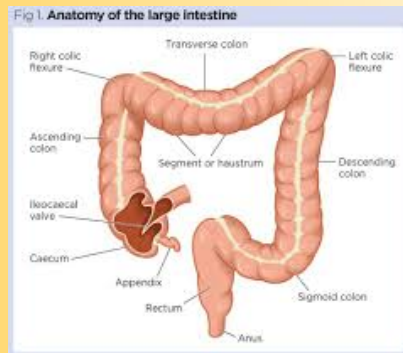
4. Which organs help to absorb nutrients?

- a) pancreas, liver and gallbladder
- b) liver, heart and spleen
- c) kidneys, liver and gallbladder



5. How long is the large intestine?

- a) 1 foot
- b) 5 foot
- c) 10 foot



*Well done ! All completed.  
Now check your answers.*

*How did you do?*

